

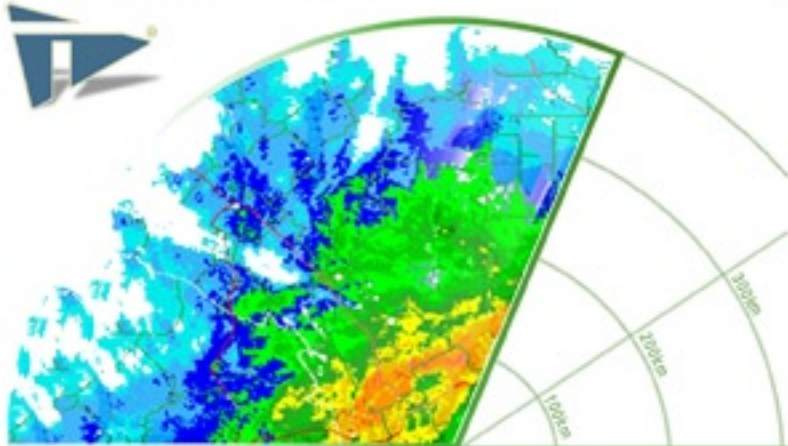
Overview

Trinnovations is proud to announce the release of its new tool – the **Weather Sentinel™**, a tool that helps users effectively visualize predicted, real-time, and historical weather data in AGI's Satellite Tool Kit (STK).

The **Weather Sentinel™** is specifically built to interact with STK through STK/Connect, allowing users to visualize and analyze weather data in WSR-88D Level I and GRIB (GRIdded binary data) weather formats.

Features of the **Weather Sentinel™**:

- Reporting tools
- 2D visualization
- 3D visualization
- Vehicle path visualization
- Assisted weather data download
- Weather data mangement



Weather  Sentinel

TRINNOVATIONS®

Advancing companies at the speed of innovation

Reports

The **Weather Sentinel™** includes reporting features that can be applied to vehicle paths and facilities, combining vehicle/facility properties with actual weather calculations. Data can be reported in actual inches of precipitation or visibility in meters at each point along the vehicle path or at the facility site over time. With STK/VO, users can display reports dynamically in the VO window to effectively show the 3D vehicle and data in the same window.

With the **Weather Sentinel™**, users can manipulate data using the following:

- Report tool
- Graph tool
- Dynamic display tool
- Strip chart

Visualization

2D Visualization:

Using STK's 2D visualization window, the **Weather Sentinel™** allows users to visualize weather data as it is applied to orbits, vehicles, and facilities.

3D Visualization:

The **Weather Sentinel™** provides 3D visualization in STK using various types of data related to weather, such as scalar data (e.g., temperature) and vector data (e.g., wind velocity). This weather data is displayed in the VO window located next to vehicles and facilities.

Vehicle Path Visualization:

Weather analysis along a vehicle path, combined with the visualization of gridded data, makes the **Weather Sentinel™** a useful tool in mission planning.

With user-defined color scales, paths can be displayed demonstrating the weather a vehicle will encounter when it arrives at a specific portion of the vehicle path. This feature of the **Weather Sentinel™** provides users with information needed to make decisions regarding vehicle paths, and changes to those paths, based on the predicted weather to be encountered. All of this is accomplished without animating STK.



Contact Us

If you would like to learn more about this exciting new tool, please feel free to contact us using the information below.

TRINNOVATIONS®

27455 Tierra Alta Way, Suite D
Temecula, CA 92590

Phone: 951-719-3787

Fax: 951-719-3749

Email: weather@trinnovations.com

Web: www.trinnovations.com